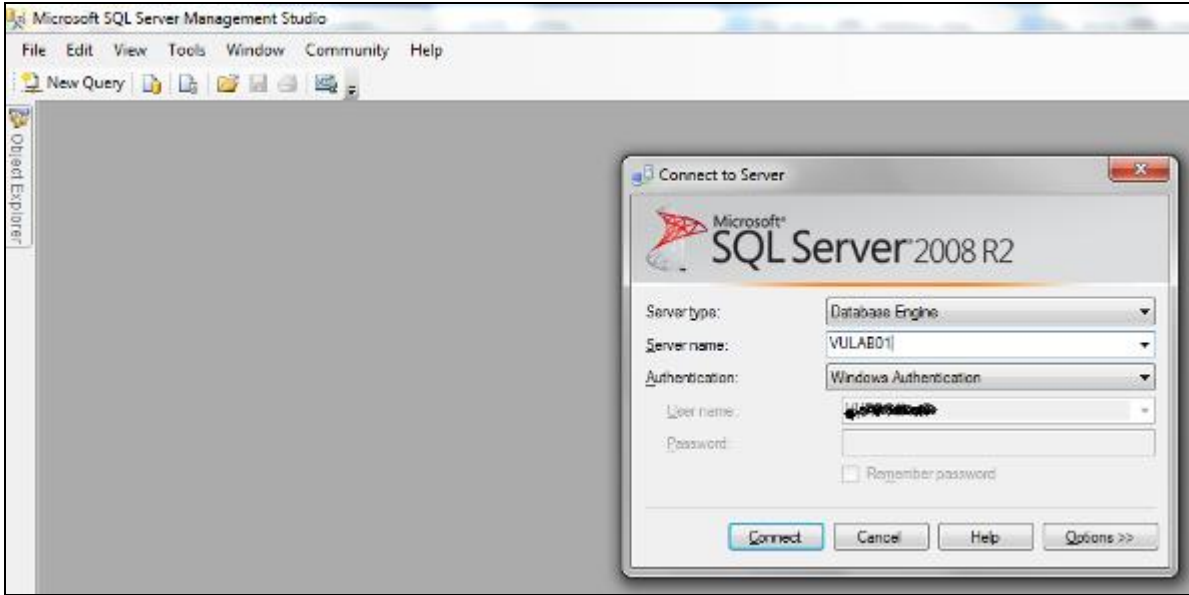
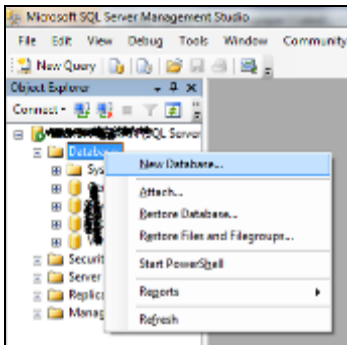


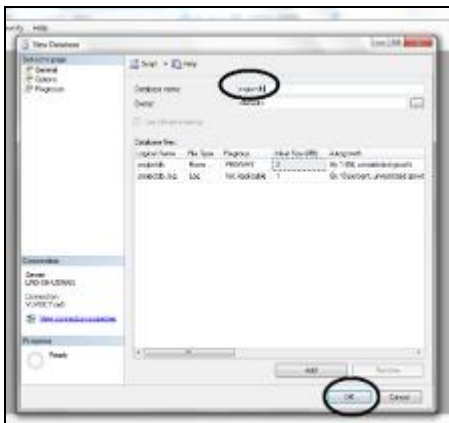
## 1) Start Sql Server 2008 Management Studio Express



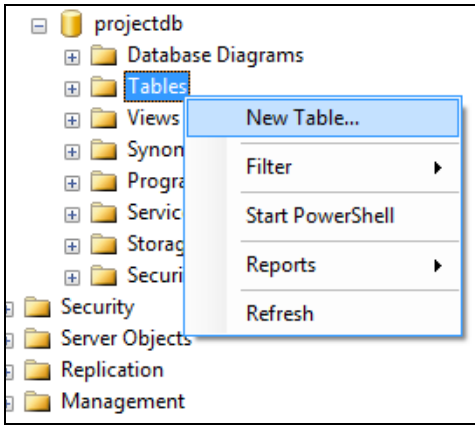
## 2) Create a new database



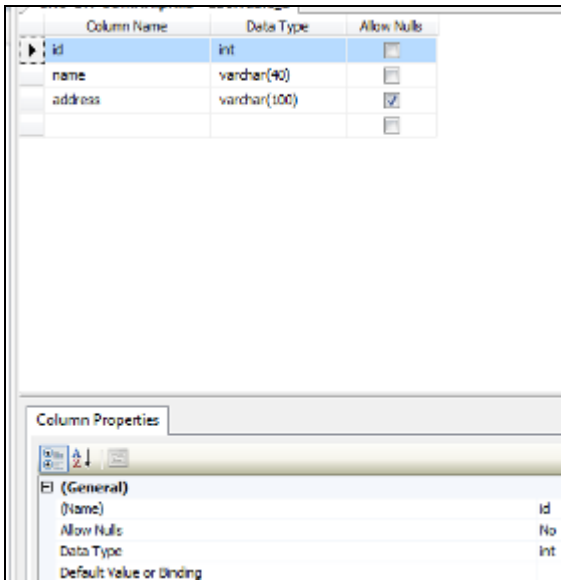
## 3) Enter database name



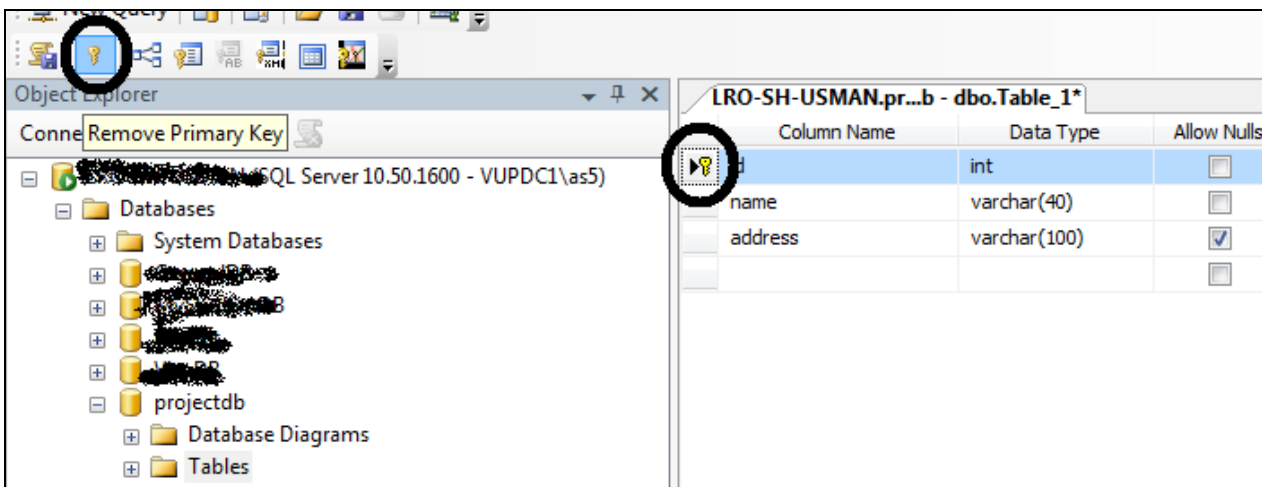
#### 4) Create new table



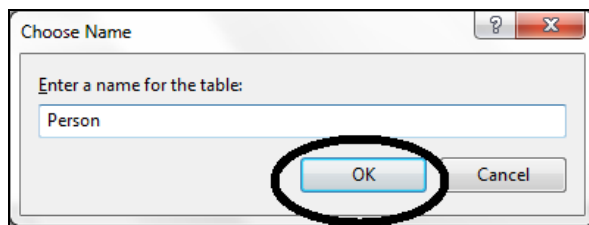
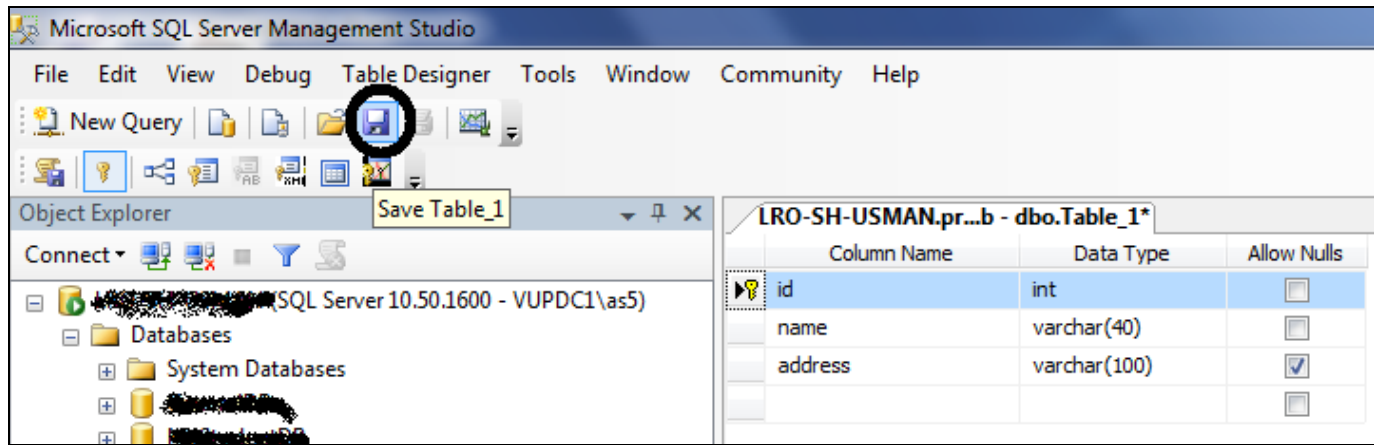
#### 5) Set table column names, their data types and other properties



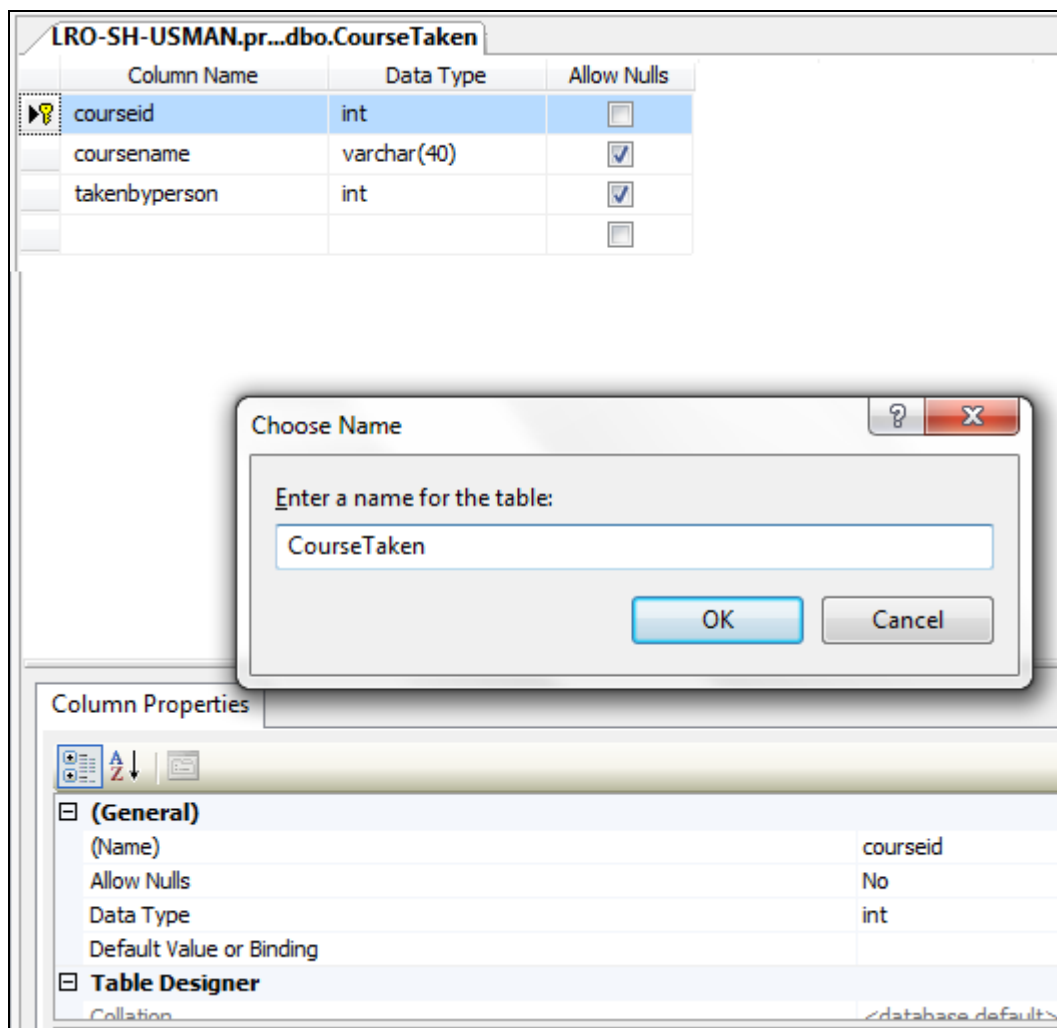
#### 6) Set primary key by selecting the column and then clicking on key icon on toolbar



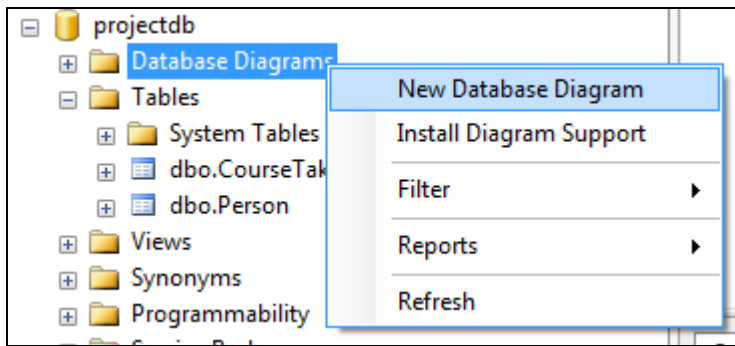
7) Save the table and set its name, then click OK button.



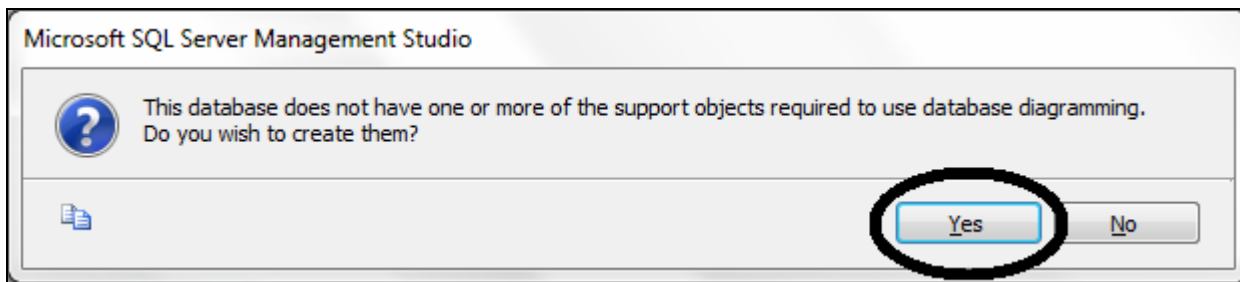
8) Follow the same process to add another table



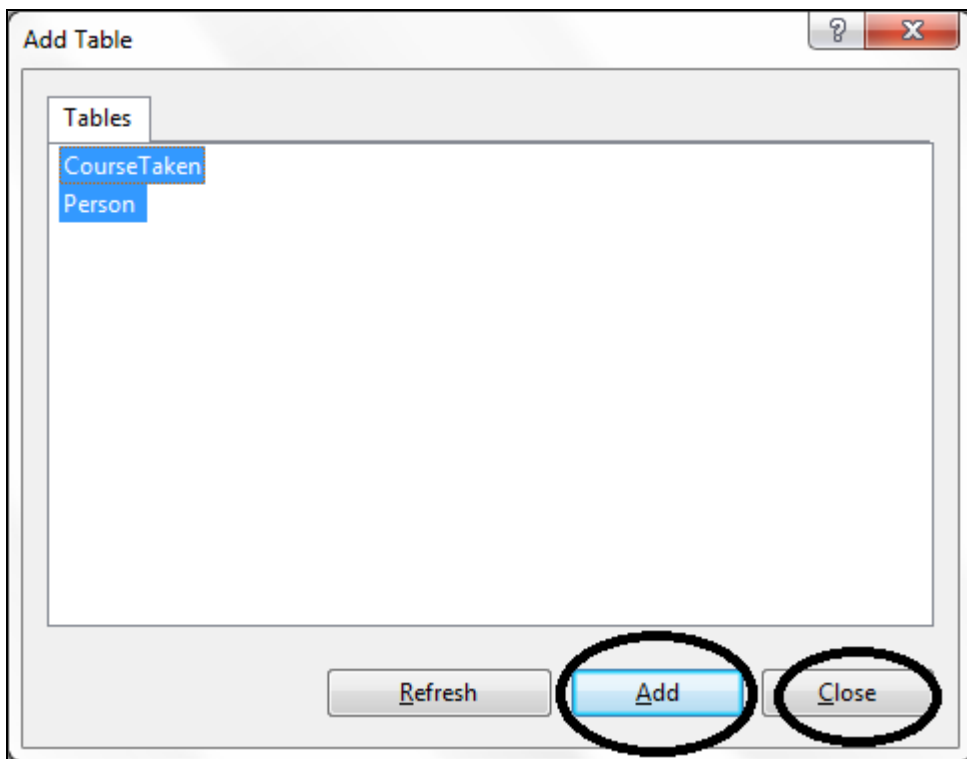
9) Create new database diagram



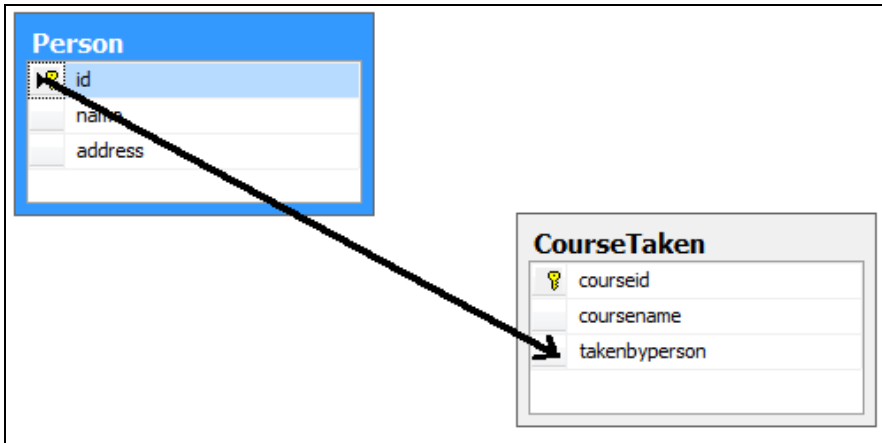
10) Click Yes



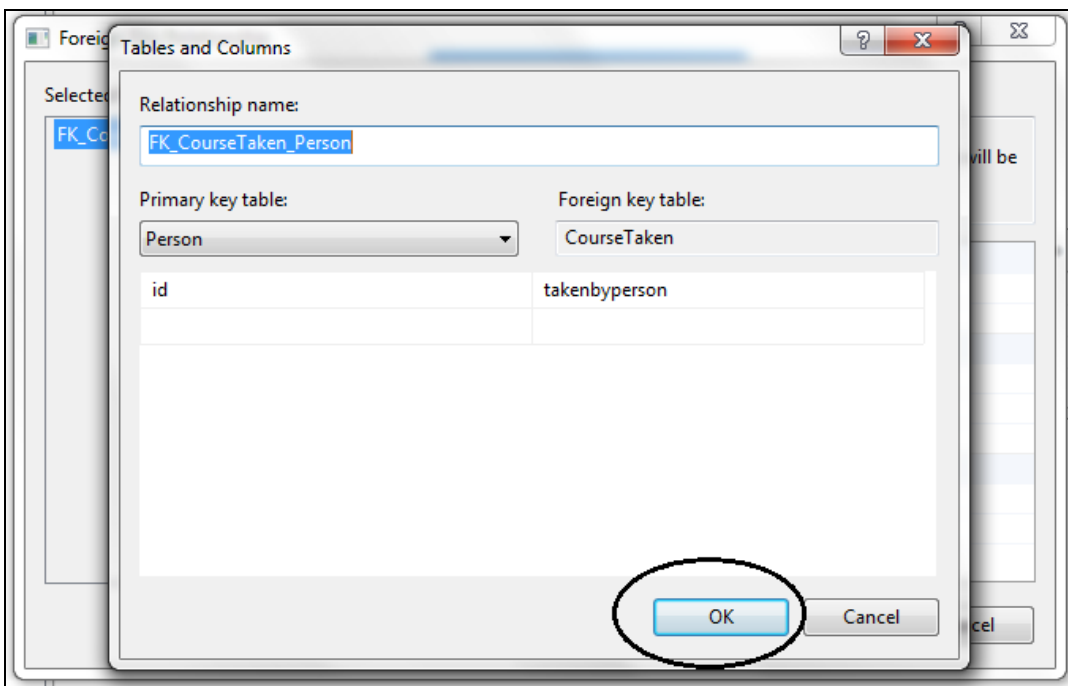
11) Select all the tables and click Add button, then click Close button



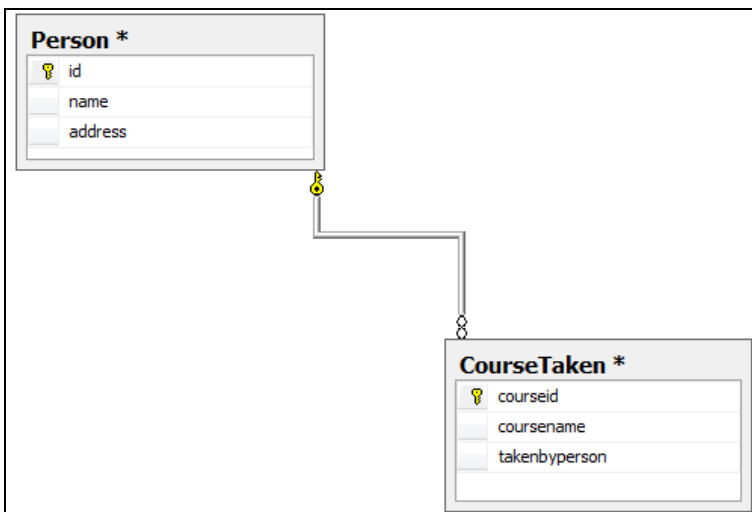
12) Drag the id column with left mouse button from Person table to takenbyperson column of CourseTaken table to create a foreign key relationship



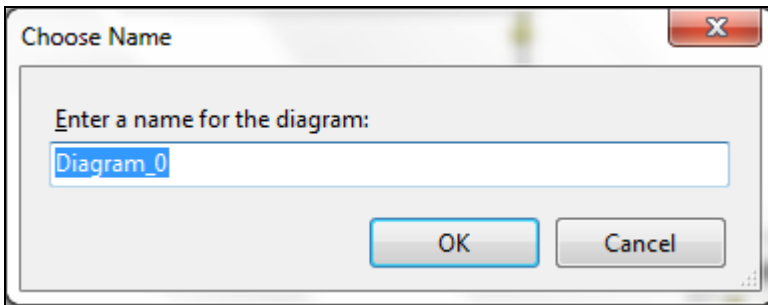
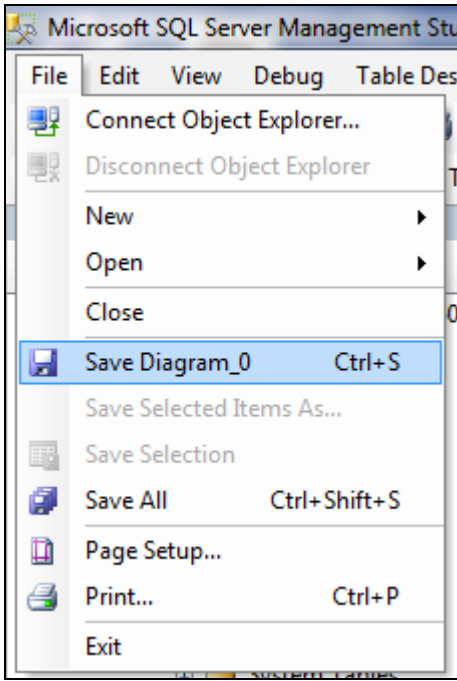
13) Click on OK button



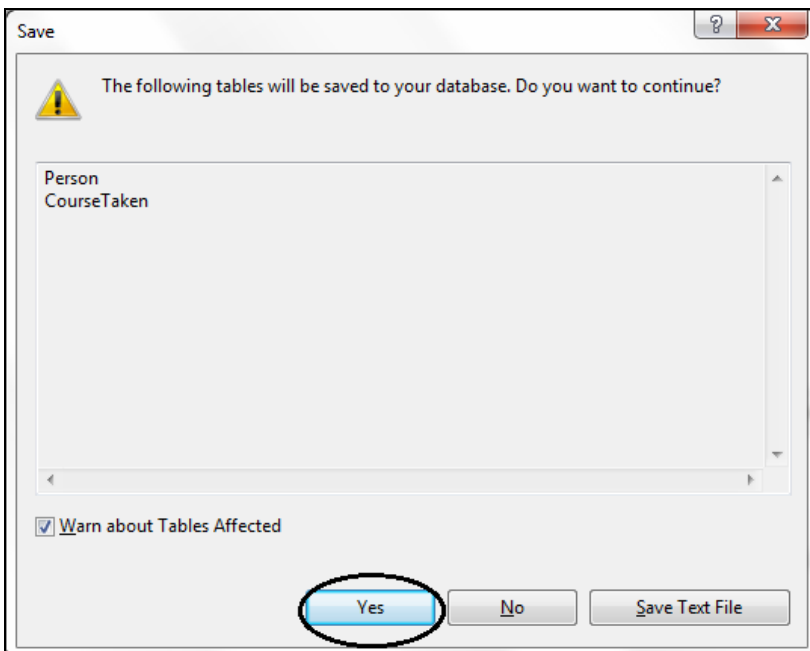
14) A relationship is created



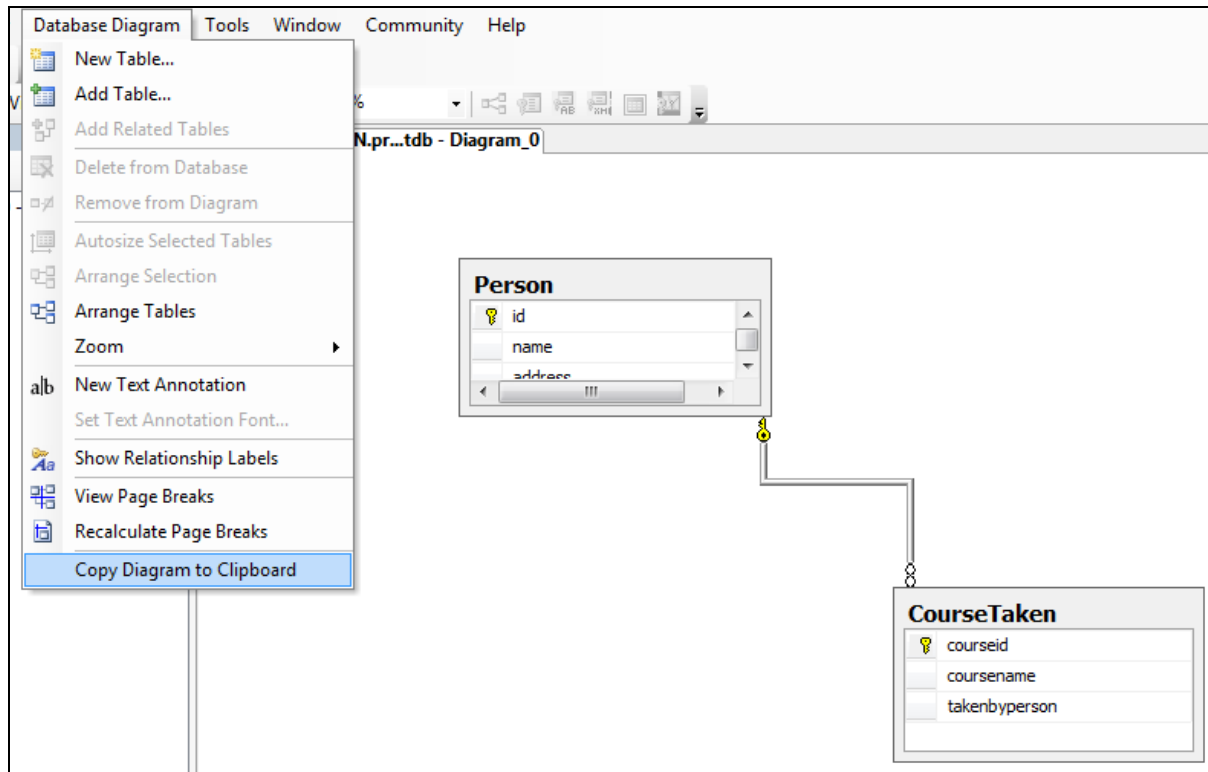
15) Use save diagram option from File menu and enter a name of the diagram



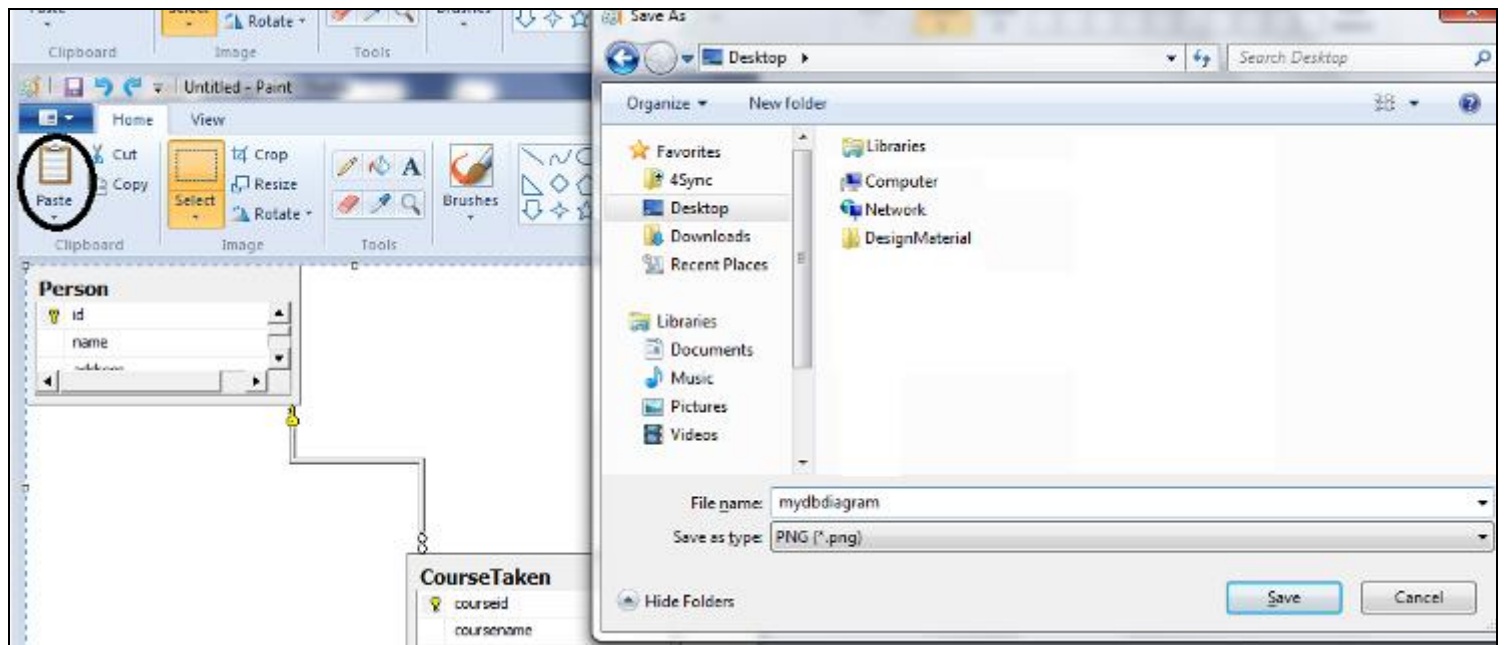
16) Click Yes



17) Use menu **Database Diagram > Copy Diagram to Clipboard** (if it is not disabled, then select all tables from the diagram with mouse or press **Ctrl + A** in the diagram to select all, then use the menu option)



18) Open paint brush, paste the diagram by pressing **Ctrl + V** or use Paste button from the tool bar, then save the diagram.



The diagram is saved so you can now use it in your MS Word document/deliverable.