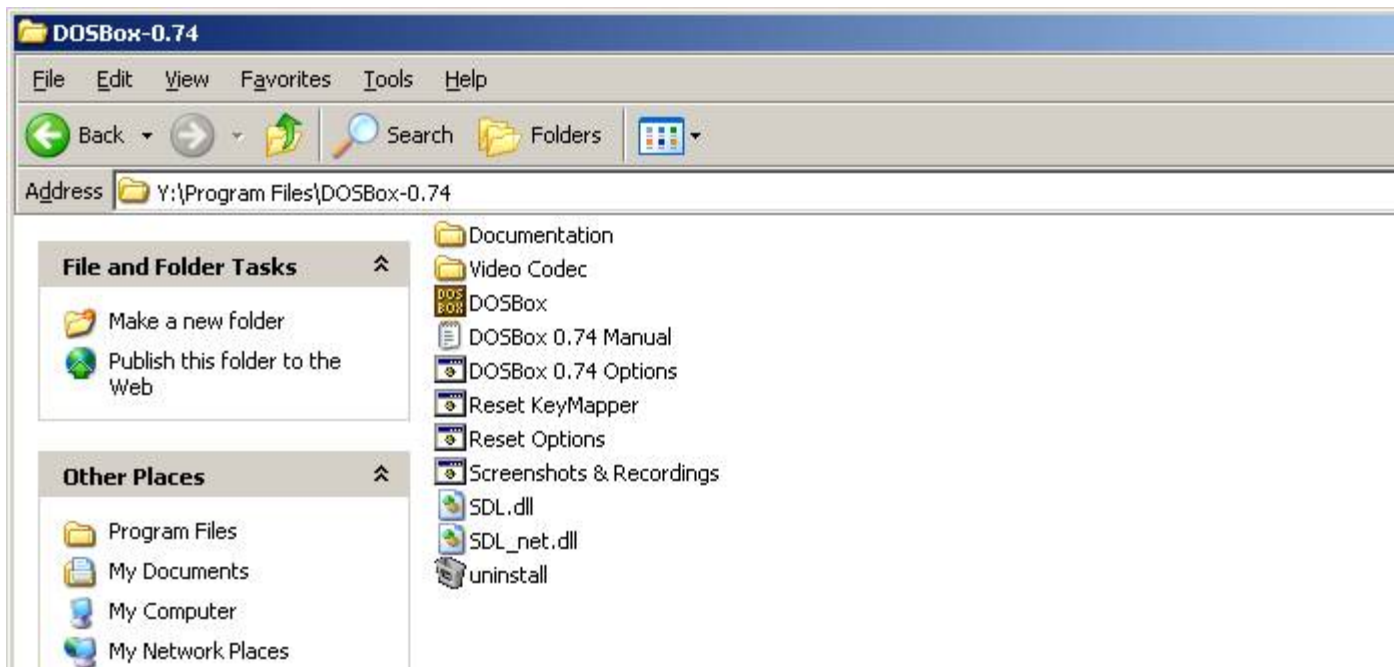
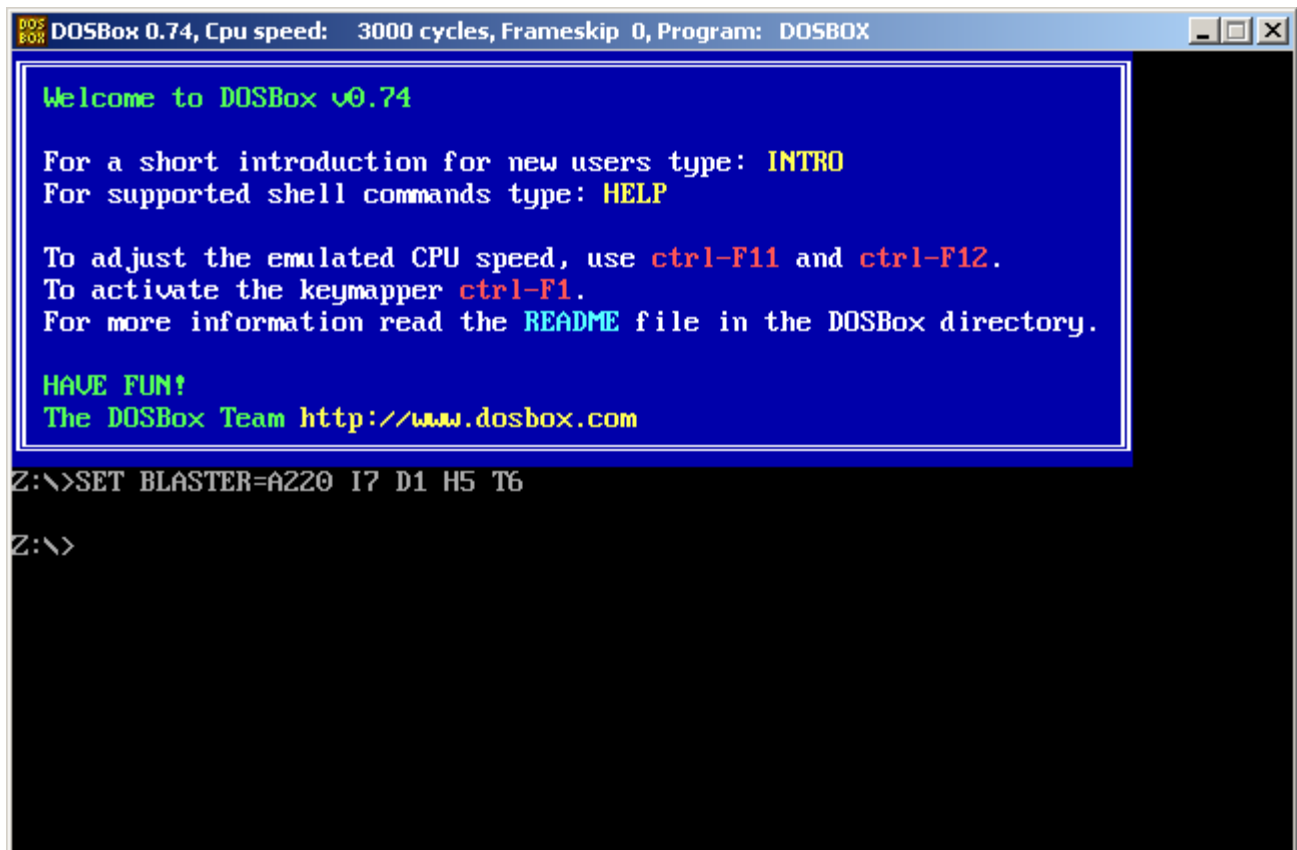


You can use DOSBOX to execute SNOBOL4.exe , download it from <http://vulms.vu.edu.pk/Courses/CS508/Downloads/DOSBox-0.74.zip> ,

Here are the steps:

1) After extracting run DOSBox.exe, A Command prompt will appear ,





DOSBox 0.74, Cpu speed: 3000 cycles, Frameskip 0, Program: DOSBOX

```
Welcome to DOSBox v0.74

For a short introduction for new users type: INTRO
For supported shell commands type: HELP

To adjust the emulated CPU speed, use ctrl-F11 and ctrl-F12.
To activate the keymapper ctrl-F1.
For more information read the README file in the DOSBox directory.

HAVE FUN!
The DOSBox Team http://www.dosbox.com
```

```
Z:\>SET BLASTER=A220 I7 D1 H5 T6

Z:\>
```

2) On this command prompt Mount the directory which contains SNOBOL4.exe with mount command , as my SNOBOL4.exe in directory D:\CS508

Command will be `mount C D:\CS508`

DOSBOX DOSBox 0.74, Cpu speed: 3000 cycles, Frameskip 0, Program: DOSBOX

Welcome to DOSBox v0.74

For a short introduction for new users type: **INTRO**

For supported shell commands type: **HELP**

To adjust the emulated CPU speed, use **ctrl-F11** and **ctrl-F12**.

To activate the keymapper **ctrl-F1**.

For more information read the **README** file in the DOSBox directory.

HAVE FUN!

The DOSBox Team <http://www.dosbox.com>

Z:\>SET BLASTER=A220 I7 D1 H5 T6

Z:\>mount C D:\CS508_

```
DOSBOX 0.74, Cpu speed: 3000 cycles, Frameskip 0, Program: DOSBOX

Welcome to DOSBox v0.74

For a short introduction for new users type: INTRO
For supported shell commands type: HELP

To adjust the emulated CPU speed, use ctrl-F11 and ctrl-F12.
To activate the keymapper ctrl-F1.
For more information read the README file in the DOSBox directory.

HAVE FUN!
The DOSBox Team http://www.dosbox.com

Z:\>SET BLASTER=A220 I7 D1 H5 T6

Z:\>mount C D:\CS508
Drive C is mounted as local directory D:\CS508\

Z:\>_
```

3) No Change to C Drive with command C:

```
DOS BOX DOSBox 0.74, Cpu speed: 3000 cycles, Frameskip 0, Program: DOSBOX

Welcome to DOSBox v0.74

For a short introduction for new users type: INTRO
For supported shell commands type: HELP

To adjust the emulated CPU speed, use ctrl-F11 and ctrl-F12.
To activate the keymapper ctrl-F1.
For more information read the README file in the DOSBox directory.

HAVE FUN!
The DOSBox Team http://www.dosbox.com

Z:\>SET BLASTER=A220 I7 D1 H5 T6

Z:\>mount C D:\CS508
Drive C is mounted as local directory D:\CS508\

Z:\>C:

C:\>_
```

4) Now run the SNOBOL4.exe

```
DOSBOX DOSBox 0.74, Cpu speed: 3000 cycles, Frameskip 0, Program: DOSBOX
To activate the keymapper ctrl-F1.
For more information read the README file in the DOSBox directory.

HAVE FUN!
The DOSBox Team http://www.dosbox.com

Z:\>SET BLASTER=A220 I7 D1 H5 T6

Z:\>mount C D:\CS508
Drive C is mounted as local directory D:\CS508\

Z:\>C:

C:\>snobol4 test /q
The Minnesota SNOBOL4.2 Interpreter: Version 2.04
(C)Copyright Viktors Berstis 1984, 1999, all rights reserved.

No syntax errors detected in source program

HELLO WORLD

Normal termination at level 0
Last statement executed was 1

C:\>
```

navigate to the directory which your SNOBOL.exe is , then run the command to compile the code.