

Create and Navigate a Database Diagram

1. Click the **Database Diagrams** button under **Objects**, as depicted (circled) in **Illustration 6**.

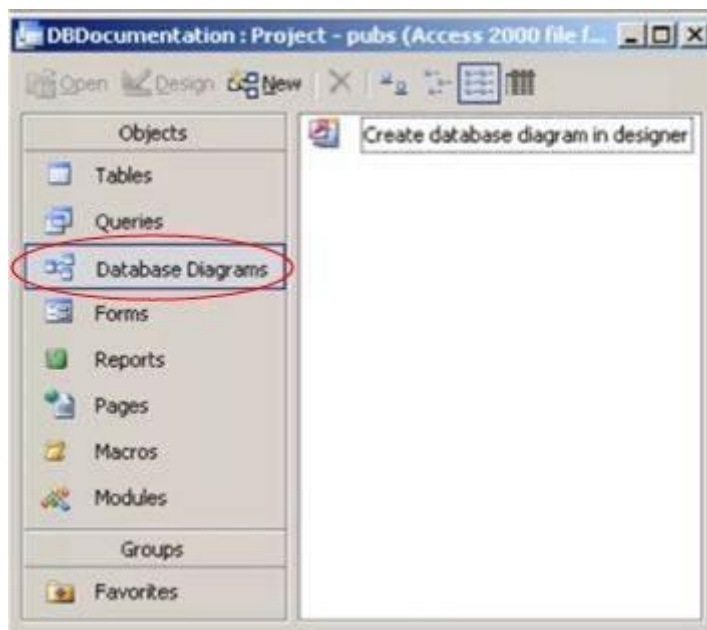


Illustration 6: Begin by Clicking Database Diagrams ...

2. Double-click **Create Database Diagram in Designer**, appearing in the right pane, as shown (circled) in **Illustration 7**.

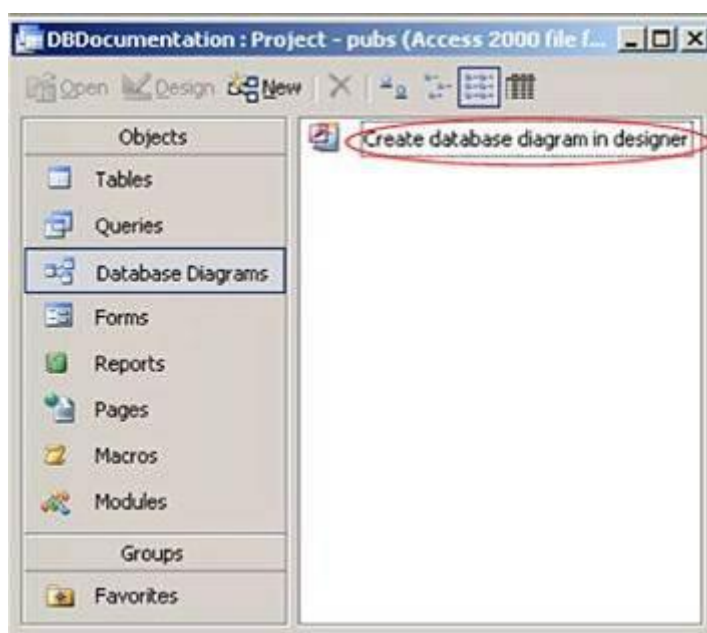


Illustration 7: Double-click Create Database Diagram in Designer ...

The diagram design area opens, together with the **Add Table** dialog, as depicted in **Illustration 8**.

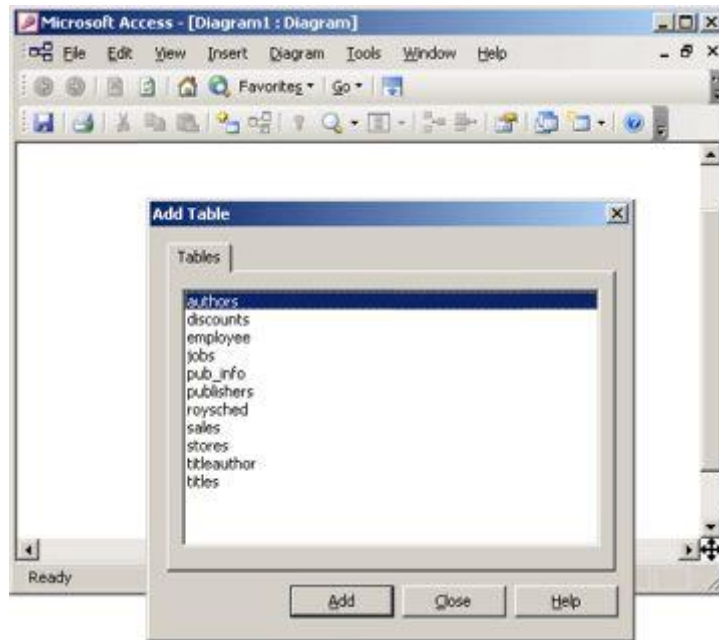


Illustration 8: Diagram Design Surface with Add Table Dialog

3. Click the **Authors** table, and, holding the **SHIFT** key down, click the **Titles** table. This should select all tables.
4. Click **Add** (we can also add tables individually, as the **Add Tables** dialog conveniently remains in place until we dismiss it).
5. Click **Close** to close the **Add Tables** dialog.

The tables appear on the design surface, as shown in **Illustration 9**.

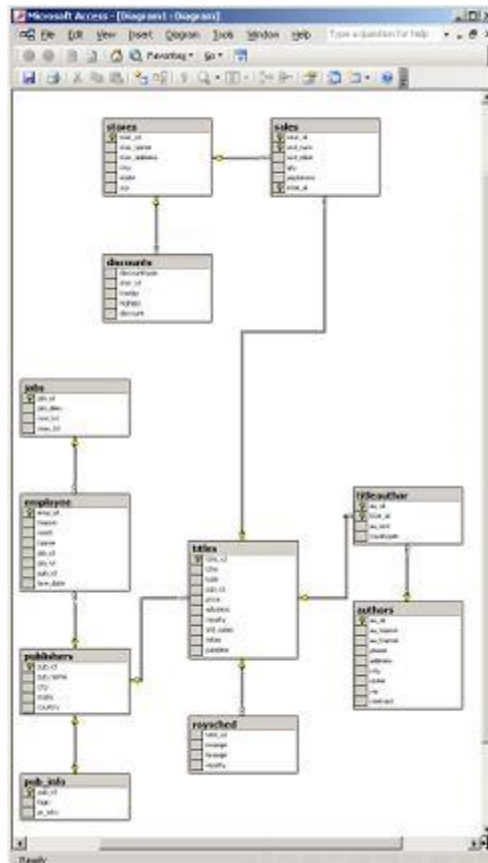


Illustration 9: Auto-Generated Diagram (Zoomed to 75%)

Let's navigate around a bit and explore some of the options we have for working with the diagram.

Field lists for each of the tables appear, with keys indicated by a small key icon. The view of the tables we see is the **Column Names** view, which we can change for any table / tables we wish to view differently, via the **Table Modes** button on the toolbar, shown in **Illustration 10**.



Illustration 10: Table Modes Button, in the Toolbar

6. Click the **Table Modes** button to expand it, as depicted in **Illustration 11**.

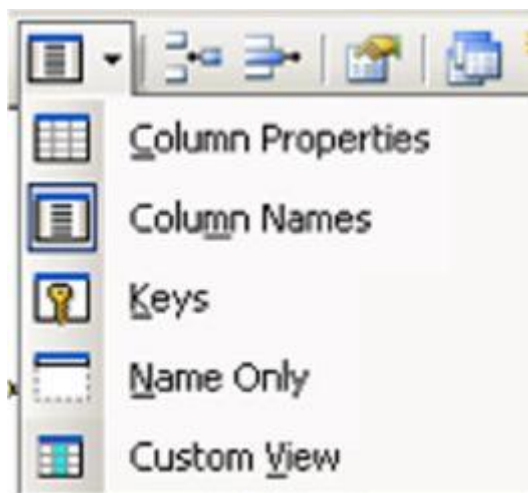


Illustration 11: Table Modes Button - Expanded, Showing Options

Reference:

http://www.databasejournal.com/features/msaccess/article.php/10895_3388551_3/MS-Access-for-the-Business-Environment-MS-Access-as-a-Documentation-Tool-Database-Diagramming.htm